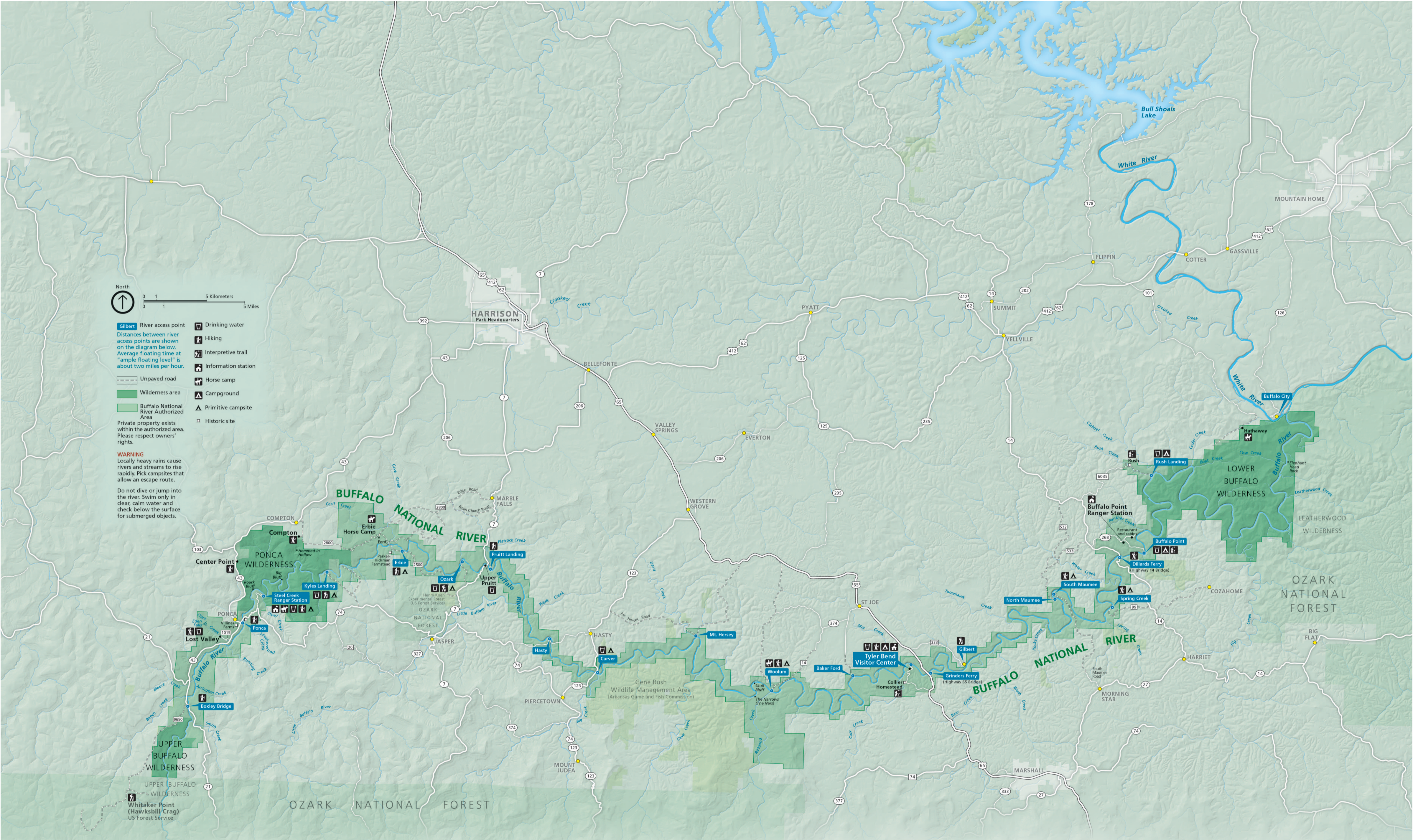




- **Gilbert** River access point
- Distances between river access points are shown on the diagram below.
- Average floating time at "ample floating level" is about two miles per hour.
- Unpaved road
- Wilderness area
- Buffalo National River Authorized Area
- Private property exists within the authorized area. Please respect owners' rights.
- ⚠ **WARNING**
- Locally heavy rains cause rivers and streams to rise rapidly. Pick campsites that allow an escape route.
- Do not dive or jump into the river. Swim only in clear, calm water and check below the surface for submerged objects.
- T Drinking water
- H Hiking
- IT Interpretive trail
- I Information station
- HC Horse camp
- CA Campground
- PC Primitive campsite
- HS Historic site



North river access point: Ponca, Steel Creek, Kyles Landing, Erbie, Ozark, Pruitt Landing, Hasty, Carver, Mt. Hersey, Woolum, Baker Ford, Tyler Bend, Grinders Ferry, Gilbert, North Maumee, South Maumee, Spring Creek, Dillard's Ferry, Buffalo Point, Rush Landing, Buffalo City

South river access point: Boxley Bridge, Steel Creek, Kyles Landing, Erbie, Ozark, Hasty, Carver, Mt. Hersey, Woolum, Baker Ford, Tyler Bend, Grinders Ferry, Gilbert, North Maumee, South Maumee, Spring Creek, Dillard's Ferry, Buffalo Point, Rush Landing, Buffalo City

DIRECTION OF FLOW → To Norfolk